



SHAFIC DAGHER

Kitchen & Wardrobes



OUR
KITCHENS
ARE MADE
FOR BRINGING
**FAMILIES
TOGETHER**

 www.shaficdagher.com



ABOUT COMPANY

OUR KITCHENS
ARE MADE FOR BRINGING
FAMILIES TOGETHER



Since 1975 we cater to services in supplying and installation kitchen cabinets, wardrobes, kitchen accessories, appliances, worktops and turnkey interior solution along with kitchen maintenance services (Replace and re-align cabinet doors hinges, repair existing cabinets and change the doors altogether).



OUR HISTORY

Shafic Dagher Ind. & Tr. Co LLC. was founded by a Lebanese Entrepreneur, in the year 1956, as a leader in the casting fields by manufacturing quality kitchens, wooden and aluminum doors including furniture cabinets.

As we grew in the said field, we broaden our market by opening a new Factory in Sharjah - United Arab Emirates since 1975, in the year our organization as of today has more than 200 workers. And in order to meet the demands in the Gulf Markets, we subsequently opened branches in Dubai and Abu Dhabi.

Shafic Dagher Ind. & Tr. Co LLC. Is a specialized manufacturer of Kitchen Cabinets & Wardrobes. At **Shafic Dagher Ind. & Tr. Co LLC.** you will find the best quality of Kitchen Works and Accessories you require, giving your Kitchen an excellent look and a brighter ambiance as ever.



**KITCHEN | WARDROBE |
VANITIES | INTERIOR**

LIVE YOUR DREAM...





Soft Touch Storm Grey | Soft Touch Red Clay



Soft Touch White | Soft Touch Relax Green

- “Soft touches” into your color of choice.
- It’s ... Colorful. Lively. Fun
- Imaginative. Versatile. Stylish.
- Capable of morphing into virtually any design or shape of kitchen!



Soft Touch
White



Soft Touch
Storm Grey



Soft Touch
Ocean Blue



Soft Touch
Relax Green



Soft Touch
Red Clay



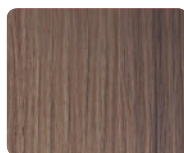
Soft Touch White | HP 123



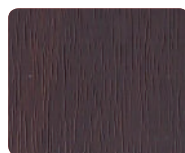
Soft Touch
White



Soft Touch
Cream



HP 123



HP 121

- Feel the sensation! Enchant your eyes.
- Love the soft touch!
- Matte to Matte, indeed is match to match!
- Give yourself contrasting colors and wooden design in a similar matte touch!





A Kitchen is just an empty box. Until you add your imagination!
Feel cozy and make some natural looks ...into the woods!



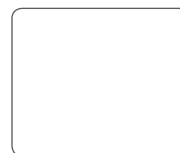
Glossy White | HP 122

- Go deep into Nature! Coziness, Calmness. Natural look.
- What a great harmony of an attractive point in your home and your spirit of compassion, tenderness and love of nature!

GLOSSY TOUCHED WITH MATTE WOODEN DESIGN KITCHEN



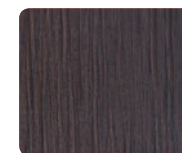
Glossy Black | HP125



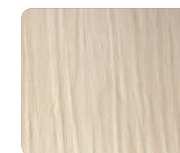
Glossy
White



Glossy
Black



HP 122



HP 125

Stunning “glossy wooden design” match with either plain, glossy or matte colors of your pick!



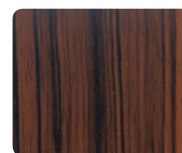
Damson | Ebony

- Exclusive
- Excellent
- Resistant
- Match and mix contrasting touch!

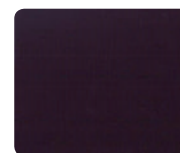
HIGH GLOSS WOODEN DESIGN KITCHEN



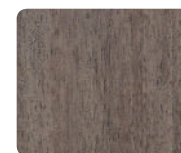
Inox | Imperia



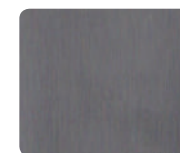
Ebony



Damson



Imperia



Inox



Line Pearl | White Glossy



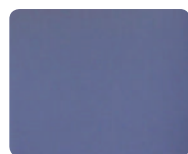
Glossy Black



Line Pearl



Line Dark Rose



Metallic Blue

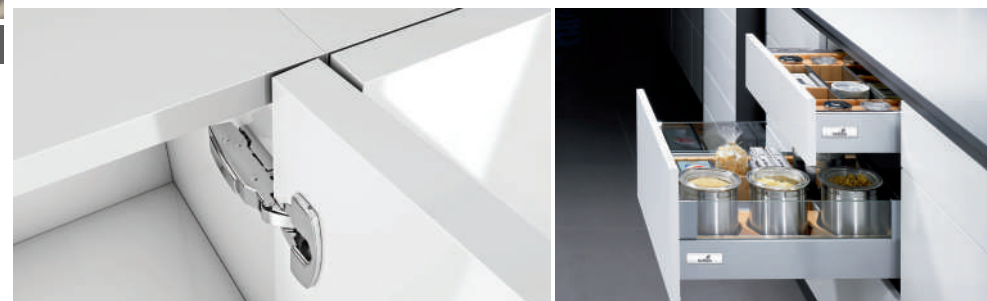


Metallic White

- There are no rules no boundaries
- Let your imagination loose with color, shape and detail!



Black Glossy | Ephesus White





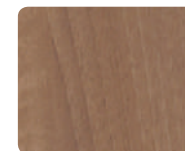
HP 106



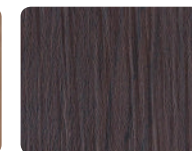
HP 122

- Give yourself limitless design freedom!
- PVC finish suitable for molding anti-scratch
- Maintain a uniform finish, smooth and homogeneous
- Dimensional stability
- Water resistance

WOODEN COLOR



HP 106



HP 122



HP 125



- Shape it
- Sculpture it
- Rout it
- Carve it
- Embrace your Door Design!



White



White Wood



Cream



A great choice for your kitchen!

Aluminum kitchen cabinets are relatively more resilient, as they do not warp or break. This makes them long lasting and eliminates the need for you to do any replacement for a long time!

Doors could be of any plain colors or wooden design to match your individuality!



Light Ivory



Beige



Silver Grey



Pastel Green



Black Grey



Steel Blue



Flame Red



Olive Green

Aluminum Cabinets with Aluminum silver profile door is more of contemporary design where you could have varieties of plain colors and wooden design colors of your choice.

With its simplicity, and a formation of linear pattern, indeed, "Less is more"!



Be mesmerized with the latest coating by natural wood color texture that gives you real touch of wood; as well as color stability to light and heat resistance with Aluminum Cabinets Alutek doors!



Wide variety of plain and wooden colors to choose from. (WOODEN)

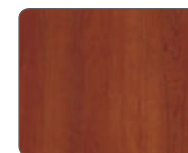
- Resilient
- Rust resistance
- Water proof nature
- Weather resistance
- Light weight and versatile



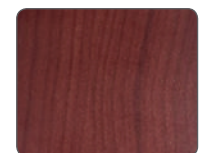
White Oak



Silky Oak



Dark Cherry



Mahogany

Long lasting. Highly durable. Trust worthy
Hence, you can enjoy more time and fewer worries!
A perfect partner for our kitchen, indeed! May it be an interior or exterior typed.



- Weather resistance
- Corrosion Resistance
- Chemical & stain resistance
- Durability

WARDROBES TOPLINE SYSTEM

SLIDING & **FOLDING DOORS**

Craving the natural looks? This decorative wooden touch invites simplicity and authenticity.



Fall in love with warmth of wood! Time for relaxation and serenity with the raw look of peeled oak, driftwood or textured surface of any wooden designs and colors.



WARDROBES SLIDELINE SYSTEM



You will surely love this most innovative sliding door system for kitchen, wardrobe cabinets and room dividers. It is very easy and convenient to install. Both the aluminum runner profiles as well as the sturdy running components simply screw into place - no routing necessary.

- High Load capacity
- One for All- this can be mounted in different applications
- Easy assembly- no milling indoors or cabinet required, individual components are simply screwed on



WARDROBES CLASSIC

HINGED **DOORS**



- Timeless beauty. Comfy. Chic
- A carefully conceived style in touch of modern design allowing everyone to savor & appreciate conservative approach & comfort
- Elegance • Beautiful • Classy



Every piece of furniture has the potential to fascinate people. With luxurious convenience that pampers its users.

Hence, be fascinated by our modern kitchen and wardrobe solution!

- High precision runners for smooth and easy running.
- Extensive programmed for different drawer sizes, design and comfort requirement.

FITTINGS

Use fittings that are wonderfully made to give you the best experience in your very own kitchen.



HANDLELESS KITCHEN!



DRAWERS RUNNERS

LUXURIOUSLY **SOFT!**



Soft Closing Drawers

- Unequalled running action.
- Wonderfully gentle opening and soft closing.
- Smooth running action without any noticeable transition.
- Ideal for large format furniture design.

HINGES

Intelligent fitting technology for furniture that can make your desires a reality



Push to Open

- Smart Designing
- Luxuriously
- Contemporary.



Soft Close Hinges

- Elegant Hinges that compliments the design of your furniture
- Whether in warm or cold environment - temperature stable Silent System for operational reliability

OUTSTANDING **DESIGN!**

ACCESSORIES

Add ACCESSORIES to your kitchen with our innovative products & services for an ideal and easy kitchen life!



These accessories are in pursuit of perfection and paying attention to details because we know that all kitchen details have an impact on the quality of your daily living and comfort.

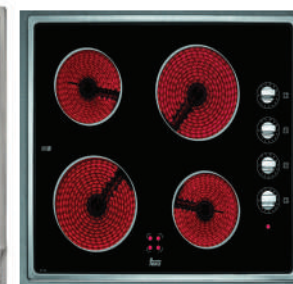
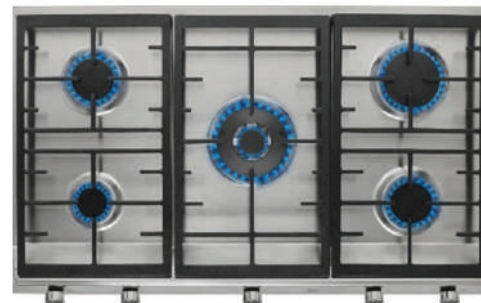


VALUING **COMFORT!**

APPLIANCES

EXQUISITE **PIECES!**

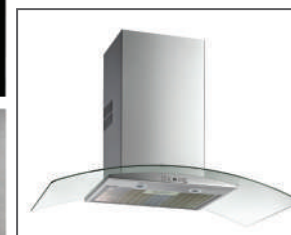
Finest kitchen appliances were brought together best of the bunch to meet your standard & satisfaction



Hobs



Fridge & Dishwasher



Microwaves, Ovens and Hoods

SINK AND TAPS

HEART OF **KITCHEN!**

A kitchen where memories are made.

Whether you're looking to add the finishing touches on your new kitchen, remodel or have picked up a newfound love for cooking and need a more capable workspace, there are many reasons to update your sink.

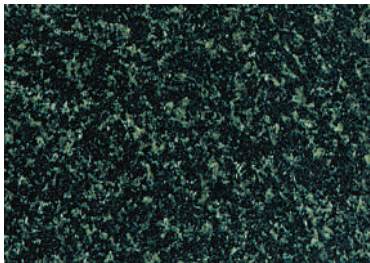
So here's giving you different types of kitchen sinks and taps ranging between style and material.



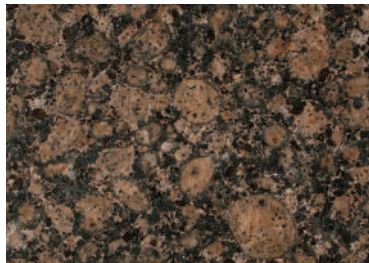
WORK TOPS

Our worktops are made of various materials with different attributes of functionality, durability, and aesthetics. These countertops may have built-in appliances, or accessories items relative to the intended application.

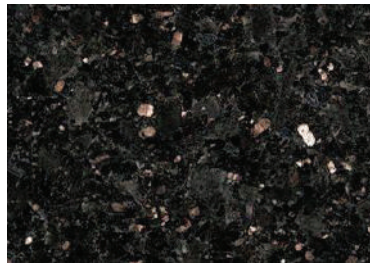
Granite is a proof that Mother Nature never stops working because it provides us with these granite countertops that can last a lifetime. It is absolutely heat resistance, scratch resistance and genuine natural material!



Hassan Green



Baltic Brown

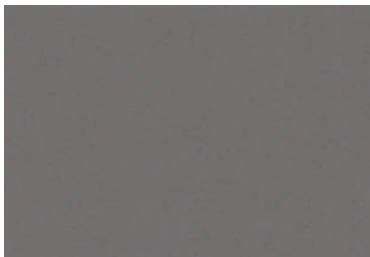


Black Absoluto



Black Absoluto

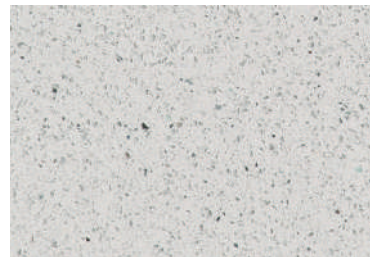
Quartz worktops are fabricated from natural quartz. Aside from the durability that it provides, resistance against stains and easy-clean up, this material has its wide variety of color options which can surely catch your eyes. Your options are nearly endless as quartz ranges from natural colors!



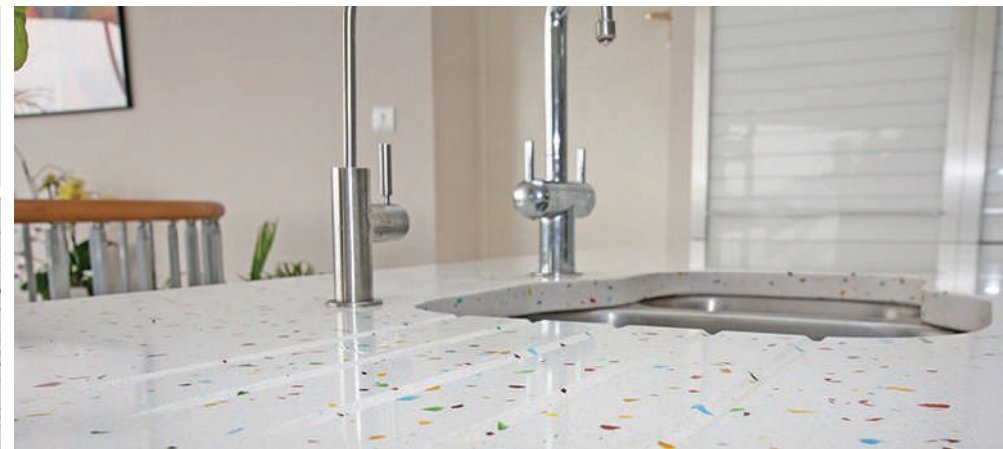
Smoke Grey



Ama Brown



Lactea



Venecia

GREAT FINISHING **TOUCH!**

All have different textures and varieties of natural colors available for you to pick up what could soothe your distinctive sharp taste and relish!

Marble gives a classy touch. Countertop won't find anything as white in nature as white marble. The most popular choices remain polished, which looks glossy, or honed, which appears matte. As long as you choose carefully, know what to expect, and care for marble countertops, they can be a beautiful, functional choice for your kitchen design that lasts a lifetime!



Crema Marble



Omani Beige

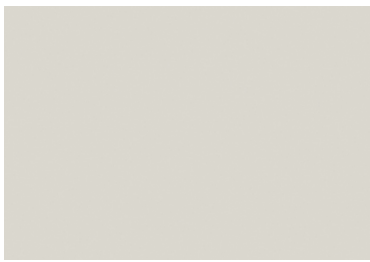


White Carrara



Calacatta

Corian Top for kitchen makes a durable, smooth surface that can seamlessly integrate sink and backsplash. It is easy to sand away stains or scratches and has lots of color and pattern options that allow it to imitate other materials like concrete and marble!



Pearl Grey



Jasmine White



Cocoa Brown



Designer White

To assure you our best quality in Kitchen Manufacturing, we are choosing the best materials to use, in order to maintain the quality we are bragging about.

Since the technology has advanced, innovative methods were being adapted by us, and equipped our Productive Line with the latest advance machinery to meet your quality requirements. We, at Shafic Dagher Ind. & Tr. Co LLC., assure our workers expertise and commitment to their work.

Our unique production facilities specialized and flexible units with over 200 skilled staff members and more than 7,000 SQM of fully equipped Joinery Plan, also Post-forming Line with Pressing, Cutting and Edging.

Thermoplastic Door Factory has a daily production capacity of over 700 doors. Fully equipped Aluminum Section for Kitchen Units. St. Steel Section reserved for heavy duty Kitchen and Accessories. Granite & Marble Cutting & Polishing Section are our assets in meeting the most stringent of our customers' demands, under one roof.



NIEMANN

AGT[®]
FURNITURE COMPONENTS



COMPAC
THE SURFACES COMPANY

E EGGER

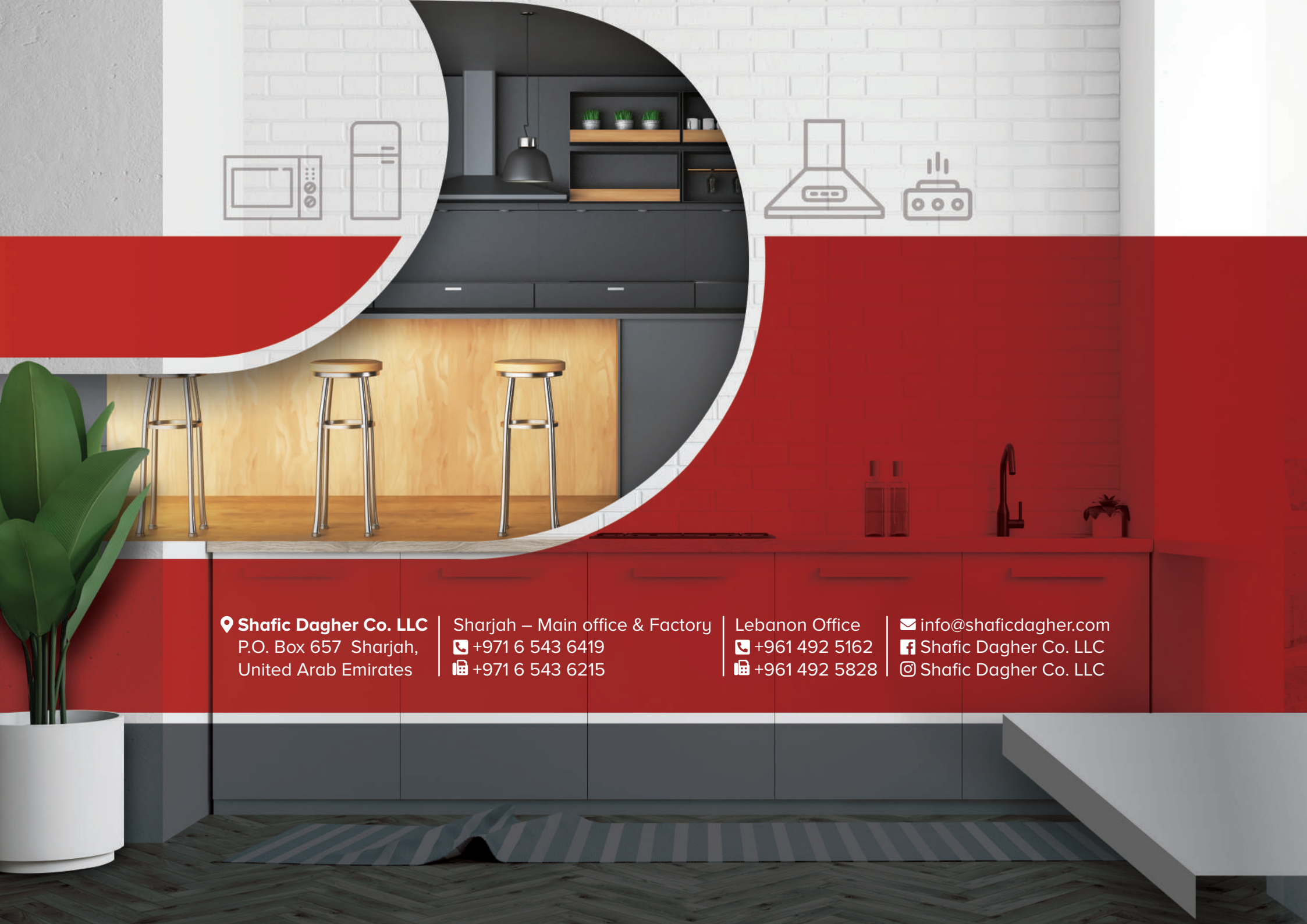
Hettich

blum[®]

teka

PYRAMIS

HIGOLD
MILANO



📍 **Shafic Dagher Co. LLC**
P.O. Box 657 Sharjah,
United Arab Emirates

Sharjah – Main office & Factory
☎ +971 6 543 6419
📠 +971 6 543 6215

Lebanon Office
☎ +961 492 5162
📠 +961 492 5828

✉ info@shaficdagher.com
📘 Shafic Dagher Co. LLC
📷 Shafic Dagher Co. LLC